

*3521 Torino Way
Concord*



Look no further! This stylish and beautifully updated 3 bedroom, 2 bath (approx 1550 s.f.) single story home features dramatic high ceilings and an open & light floorplan that's perfect for entertaining! It's ideally located on a dead end street in the popular view neighborhood of Ygnacio Hills near the Walnut Creek border!

Features listed on the reverse side

Judy Weichold

Broker CRS, GRI
Mobile 925.200.4022
Fax 925.871.5638
1280 Civic Drive Ste 200
Walnut Creek, CA 94596
judy@judyshomes.com
www.judyshomes.com

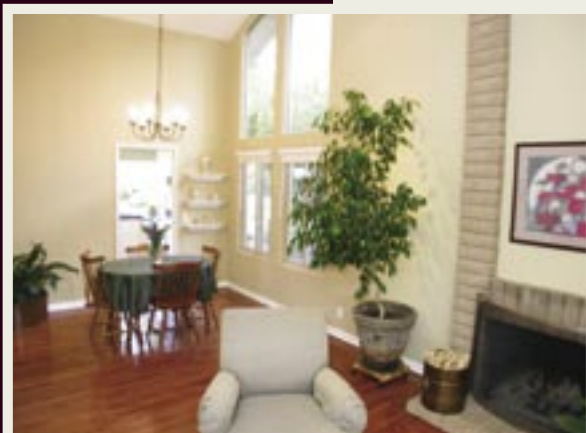


Offered at \$615,000



*Information deemed reliable, but not guaranteed.

Additional Features



- Welcoming tiled entry to vaulted and beamed formal living area with brick wood burning fireplace & sunny picture window
- Adjoining vaulted formal dining area with dramatic clearstory windows (dual paned)
- Gorgeous oak floors everywhere (except hall bath and laundry); custom base moldings; six panel doors with decorator hardware throughout
- Updated kitchen featuring white cabinetry with custom hardware, granite counters, stainless steel dual sink with decorator fixtures, smooth top range with speed bake feature, newer microwave & dishwasher too. Windows facing the yard bring the outside in!
- Flexible family room area off the kitchen offers additional dining space if needed. Patio door to rear yard.
- Large master suite with walk in closet, ceiling fan and patio doors to the yard. Totally remodeled master bath with dual sinks and tiled shower/whirlpool/ soaking tub combo—a comforting retreat!
- Remodeled hall bath with tub/shower; both baths feature state of the art Toto toilets with the handy self closing feature.
- Two additional bedrooms—one with decorator perimeter shelving. Two inch white decorator blinds (also in living & dining rooms)
- Inside laundry room; central heat and AC; “popcorn” ceilings removed; replaced composition roof.
- A unique orientation in front allows for an oversized driveway with possible RV parking. Extra large garage too with finished walls & insulated ceiling, carpeting, laundry tub, extra storage and more!
- Easy care secluded rear yard with concrete/aggregate and brick patio, lawn, and multilevel planting areas.
- An easy commute to BART and freeways with easy access to the East Bay Hiking Trails. Popular Mt. Diablo schools including highly rated Woodside Elementary!